

Hermitage Park Commemorations Guidance

1.0 EXECUTIVE SUMMARY

- 1.0.1 This report sets out guidance on the style and type of commemorations suitable for Hermitage Park, covering trees, benches and other commemorative features. A criteria is proposed to ensure appropriate and non-offensive language is applied to commemorative plaques/labels.
- 1.0.2 The Helensburgh and Lomond Committee met on 22nd March 2018. The Committee requested a paper be submitted outlining the approach to commemorations within Hermitage Park.
- 1.0.3 As part of the restoration of Hermitage Park a street furniture strategy was agreed with partners. The new bench style (*FalcoRelax*) matched other features added to the park as part of the works, including bins, lampposts, the pavilion, interpretation and bike stands. Benches have been selected for their robustness and minimal maintenance needs.
- 1.0.4 The Friends of Hermitage Park assisted with promoting commemorative benches and trees in the park, and continue to do so in partnership with the Council. The Friends aim to continue to assist the Council with managing and maintaining commemorations within the park.
- 1.0.5 Amenity Services will select and approve new commemorations within the park, this will include the siting, numbers of and, in terms of trees, species.

1.1 RECOMMENDATIONS

- 1.1.1 The Helensburgh and Lomond Area Committee note the commemoration guidance for Hermitage Park.
- 1.1.2 The Committee approve the criteria ensuring appropriate and non-offensive language is applied to all commemorations within the park (5.1.4).

Hermitage Park Commemorations Guidance

2. INTRODUCTION

- 2.1. This report sets out guidance on the style and type of commemorations suitable for Hermitage Park, covering trees, benches and other commemorative features. A criteria is proposed to ensure appropriate and non-offensive language is applied to commemorative plaques/labels.
- 2.2. The Friends of Hermitage Park assisted with promoting commemorative benches and trees in the park, and continue to do so in partnership with the Council. The Friends aim to continue to assist the Council with managing and maintaining commemorations within the park.

3. RECOMMENDATIONS

- 3.1 The Helensburgh and Lomond Area Committee note the commemoration guidance for Hermitage Park.
- 3.2 The Committee approve the criteria ensuring appropriate and non-offensive language is applied to all commemorations within the park (5.1.4).

4. BACKGROUND

- 4.1 The Helensburgh and Lomond Committee met on 22nd March 2018. The Committee requested a paper be submitted outlining the approach to commemorations within Hermitage Park.
- 4.2 As part of the restoration of Hermitage Park a street furniture strategy was agreed with partners. The new bench style (*FalcoRelax*) matched other features added to the park as part of the works, including bins, lampposts, the pavilion, interpretation and bike stands. Benches have been selected for their robustness and minimal maintenance needs.

5. DETAILS

5.1 Commemorative Benches

- 5.1.1 As part of the park restoration works 15 new benches have been installed (see appendix 1 for bench location plan). Whilst there is space for additional benches within the park, a maximum number of benches will be set and locations agreed by Amenity Services.
- 5.1.2 Currently, there are no benches within the memorial garden as a specific style of bench was planned for this area, namely one that used a more traditional style and one that could be manufactured by volunteer groups. The number of benches within the memorial garden has been set at seven, this includes a single long bench (8m) located at the foot of the south facing wall.

In addition, as part of the Activity Plan for Hermitage Park, four new corner commemorative benches will be added. These will allow commemorations to be added relating to more recent conflicts. Each feature will commemorate a different part of the Armed Forces; Navy (submariners), Army, Airforce and Civilians.

- 5.1.3 All plaques will be bronze, and will have a maximum number of characters (84), including spaces that can be included in the inscription, as shown below. Type script corresponds with interpretation in the park. Plaques will be located on the top centre of each bench, or the centre middle of the backless benches.

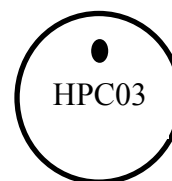
<p>THE INSCRIPTION IS 4MM HIGH</p> <p>CAPITAL LETTERS OVER 4 LINES</p> <p>GIL SANS TYPEFACE</p> <p>PLAQUES MEASURE 48MM X 100</p>

- 5.1.4 The following criteria has been developed to ensure wording on all plaques is appropriate:
- The proposed wording must not be used as a means of advertising any business;
 - The proposed wording must not cause offence i.e. likely to be upsetting, insulting, or objectionable to some or most people;
- 5.1.5 Annual bench maintenance within the park will be undertaken by park staff with support from volunteers. The style of bench agreed for the park has been chosen for its robustness and low maintenance requirements (FalcoRelax).

5.2 Commemorative Trees

- 5.2.1 Commemorative tree species and locations will be decided by Amenity Services. Trees will be located for aesthetic reasons and will be limited in number depending on the management needs of the park. Tree labels will be used to show trees of interest only, any commemorations will be located on the reverse side of the tree

label. An additional small circular tag will be located within the tree to mark the tree should the tree label be removed. See example tree label and tag below.



Tree tag in same style as label.

5.2.2 Replacement tree labels will be managed and funded by the Friends of Hermitage Park, with a maximum of three replacements, after which a record of the commemoration will be maintained within a commemoration book (for details of the commemoration book see 5.5).

5.2.3 The plant labels will be a standard Botanical Label style (see image above), similar to those used within National Trust and Botanic Gardens.

5.2.4 Maintenance of trees will be undertaken by the Council. Any trees that die within the first three years will be replaced.

5.3 Other Commemorative Features

5.3.1 Other commemorative features, for example the Hermits Well Gate Memorial, may be added to the park. However, each feature will need to be part of the agreed park masterplan and any commemorative plaques will be positioned so as not to distract from the overall aesthetic of the feature and will be a similar size to the proposed bench plaque. An image of Hermits Well Gate Memorial can be found in appendix 2.

5.4 A commemoration book will be located within the pavilion duplicating all commemorative information located on benches, trees and features. It will include all previous commemoration details. A digital version of the book will also be maintained.

6. CONCLUSION

6.1 The commemoration guidance and proposed criteria, which will ensure appropriate and non-offensive language is applied to commemorative plaques/labels, will ensure a standard is maintained throughout Hermitage Park. Input from the Friends of Hermitage Park and other volunteer groups will assist with the long term maintenance and management of the commemorations located within the park.

7. IMPLICATIONS

7.1	Policy	This projects supports delivery of the SOA in particular outcome 6, that we live in safer, stronger communities.
7.2	Financial	None
7.3	Legal	None
7.4	HR	None
7.5	Equalities/Fairer Scotland Duty	None
7.6	Customer Services	None

8. APPENDICES

- 8.1 Appendix 1 Hermitage Park site plan showing locations of park furniture as installed as part of the park restoration works.
- 8.2 Appendix 2 Hermits Well Gate Memorial, design and image.

Executive Director of Development and Infrastructure – Pippa Milne

Policy Lead: Cllr Aileen Morton

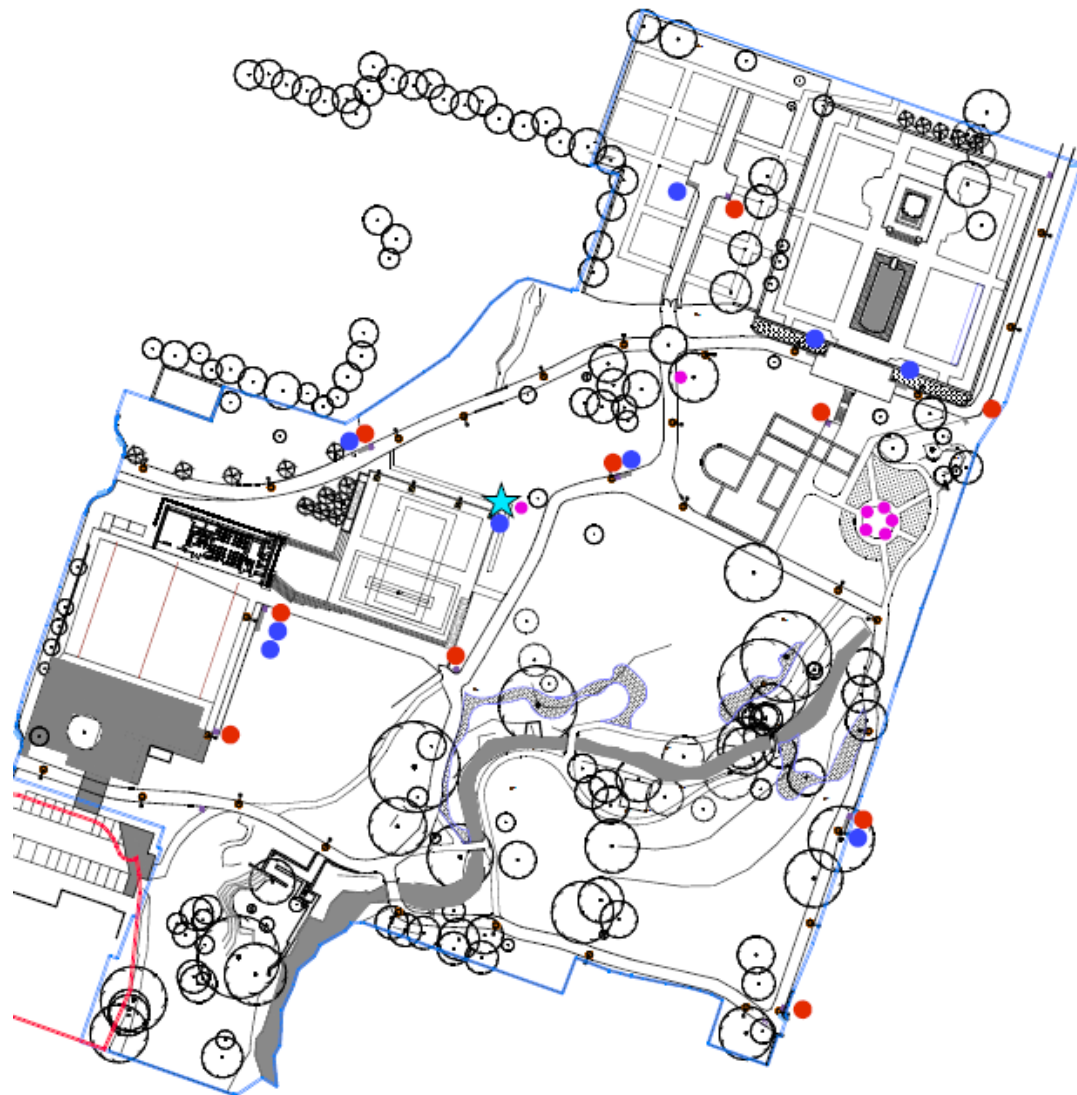
15th November 2018





For further information contact:

Melissa Simpson, Hermitage Park Delivery Officer/Park Manager

Tel: +44(0)1436 658989 melissa.simpson@argyll-bute.gov.uk

8.1 Appendix 1 Hermitage Park site plan showing locations of park furniture as installed as part of the park restoration works.



-  SEATS
-  BINS
-  CURVED SEATS
-  CCTV

HERMITAGE PARK
SKETCH P1601/804B
FURNITURE POSITIONS

NOT TO SCALE

20.09.18

JON SIMMONS
Landscape Architecture



8.2 Appendix 2 Hermits Well Gate Memorial, design and image.

